



Lifting power for the future

Truck cranes for recycling

Cranab®  **Slagkraft®**

FASSI GROUP

CRANES | RECYCLING

Strong, versatile cranes for recycling

Cranab's RZ cranes are specially designed for professional use in recycling. The philosophy behind them is that they should be responsive, easy to operate and very reliable. The cranes are fully adapted to today's modern Euro 6 trucks.

RZ cranes are designed for compact and safe mounting behind a truck cab. From there, the operator gets the very best visibility and the crane the best radius of action. Cranab's RZ cranes have a 425 degree slewing angle and are single or double telescopic, which means that each crane can make maximum use of the working area regardless of reach. The operator's position is available in a number of designs and alternative locations for the best comfort and working environment. The crane properties have been adapted for safe work in densely populated environments.

The stabiliser beam is available in a standard width as well as a wider version. It is particularly suitable for recycling applications and in cases where smaller trucks have been equipped with slightly larger cranes. The wide stabiliser beam provides optimal stability and the support legs have good raising and lowering properties.



OUR CRANES



RZ13 • RZ13TR • RZ15 • RZ16XP A perfect choice for material handling and recycling. Modern, strong and flexible cranes with maximum reach between 7.9 and 10.5 metres. Available as a single or double telescope crane and in several versions. The RZ16XP has a powerful working pressure of 31.5 MPa.



RZ18 • RZ18R • RZ18TR • RZ20 • RZ22XP Our most robust and muscular Z-cranes, designed to handle the toughest tasks and the heaviest lifts. Equally as efficient and fast as the smaller cranes, and with the same good qualities, from 8.3 to 10.2 metres and working pressure between 26 and 31.5 MPa.

”

”The RZ13TR is a crane with the potential to make a difference in the green industry thanks to its flexibility, robustness, ease of use and especially its performance.”

Anders Strömgren, CEO Cranab



OPTIONAL EXTRAS & FEATURES

Stabiliser beam, control system and own colour scheme.

More options and features can be found on pages 8 and 9.



RZ13 / RZ15 / RZ16XP / RZ18 / RZ20 / RZ22XP

Robust cranes for recycling

With Cranab's efficient RZ-cranes, every operator becomes productive right from the outset. The RZ range consists of six optimised sizes.

Our RZ13, RZ15 and RZ16XP are available in several versions with maximum reaches from 7.9 to 10.5 metres. With their market-leading reach and high lift capacity across the entire working area, these cranes meet the needs of most users. If even more power and strength is required, there are the muscular giants RZ18, RZ20 and RZ22XP.

UP AND RUNNING IN NO TIME

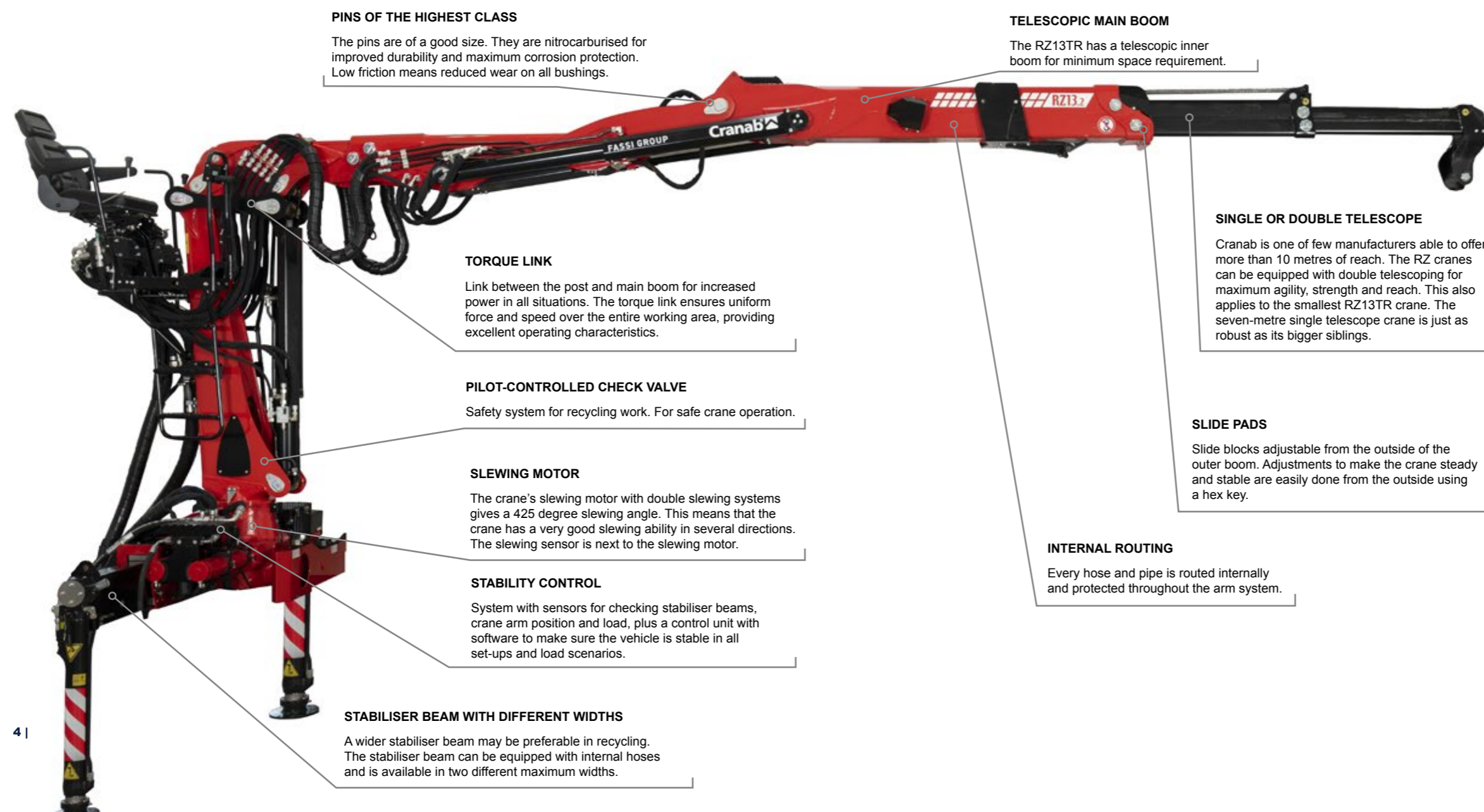
RZ-cranes are quickly extendable and retractable. It takes a short time for the support legs to be extended until the crane is ready for use. World-class hydraulics give responsive, strong cranes and leading operating characteristics. The carefully adapted geometry together with the crane's other components and solutions lay the foundation for the very efficient handling of scrap or other materials. The characteristics of the crane and the

choice of operator's position locations mean the operator always has a full overview. Remote control is also available as an option.

TR – AN EXTRA COMPACT SOLUTION

Both RZ13 and RZ18 are available in compact TR versions, specially designed for installation behind the driver's cab. The TR unites strength with agility and combines reach, high lifting force and innovative design.

TR cranes take up minimal space in parking mode as they require no space under the stabiliser beam. TR cranes are suitable for modern trucks with short wheelbases. They are used for recycling, handling construction materials and loading into containers or onto platforms.



→ DID YOU KNOW THAT...

... Perfect for the latest trucks

The 7.9-metre RZ13TR.1 and 9.5-metre RZ13TR.2 and RZ18TR.2 are designed not to protrude under the stabiliser beam in parking mode. This makes them ideal for recycling work and the very latest trucks.

... Weld joints undergo ultrasonic inspection

The manufacture of the RZ cranes is meticulous and welding is substantially robotised. Sitting in the operator's position must be absolutely safe. Accordingly, the welded joints in the area around the crane column and mounting undergo a mandatory ultrasound inspection to ensure they meet our high standards.

→ R, TR AND XP VERSIONS

REACHES UP TO 10.5 METRES

Cranab is one of few manufacturers able to offer more than 10 metres of reach.

R AND TR VERSIONS

We offer a great number of RZ-crane versions. Cranes with single or double telescope design, different compact solutions and different lifting power capacities. R is a compact crane suitable for trucks and chassis with tight space. XP is a crane version with high lifting power for the most demanding lifting applications.



OPERATOR'S POSITION

Without the operator nothing gets done, and every user is unique. We've taken that into account.

Operating the crane and grapple equipment is part of the operator's everyday life. Because the operator's position must be safe, ergonomic and enable rapid start-up, we have created several alternative solutions.

First, choose whether the operator's position should be open or equipped with a cab. Depending on the size of the crane, the nature of the work and the truck model, the open operator's position can be located centrally or to the right or left of the crane column. The cab is mounted to the left as standard, but can also be ordered for right-hand installation.

While the cab provides the best comfort and weather protection, the open operator's position can be supplemented with a canopy and heated seat for an optimum operator environment.



**MAKE THE RIGHT
CHOICE RIGHT AWAY**

**Contact us or
a dealer for personal
service when choosing
your equipment.**

You can find your nearest
dealer at www.cranab.se

Comfort and at-a-glance controls

The cab has a comfortable, ergonomic operator's seat and well-placed controls. The cab can be fitted with mechanical or electrical controls.

Operator's cab

Our operator's cab comes with a stainless steel body. The cab is a modern, ergonomic solution that creates a comfortable, protected and safe operator environment in all weathers and climatic conditions. The quick height adjustment of the cab means visibility is always optimal. A protective windscreen blind is available as an option.



Open operator's position with multiple options

Great flexibility. The open operator's position is available with either mechanical or electrical controls.

The seat can be located to the right or left of the crane column or centrally.

For best comfort, the open operator's position can be equipped with a heated seat and weather protection against rain, wind, snow and strong sunlight. Both operator's seat armrests are foldable and extra lighting can be selected for installation on the outer boom and at the operator's position.

The operator's seat height is more than ample, and provides for excellent visibility. Thus there is excellent visibility across the entire work area, which enhances safety and makes work easier.

There are solid, anti-slip steps height adjusted for ease of entry.

The crane's sturdy railings and hand holds make climbing safe.

Joysticks and levers

There are various joystick and lever options such as mechanically 2+2 or 4+2 as well as electrical controls.



+ Colour scheme

The cab can be painted in any colour. Colour selection is based on RAL codes.

+ Entertainment

The driver's cab can be equipped with a radio package (DAB and FM) including USB, aux jacks and two speakers.

+ Lighting

Forward-facing, roof-mounted LED light ramp (120W, 8800 lumens) and a rearward-facing LED light mounted on the lower part of the cab are available as options.

+ Engine control

Special motor controls that govern start, stop and speed adjustment, are available as options.

+ Heating & cooling

A water heater, diesel heater and an air conditioner are three options that increase comfort.



OPTIONS & FEATURES

It's important for us that your truck crane meets your expectations. Together, we'll tailor a solution that meets your specific needs perfectly.

Our cranes have the highest standards right from the outset. But there are still opportunities to equip the crane a little extra so you get it the way you want it.

CONTROL SYSTEM AND LEVERS

Depending on the crane model and operator's environment, we offer different kinds of control systems. You can choose mechanical 2+2, mechanical 4+4 or electrical controls.

STABILITY CONTROL

The system FSC – Fassi Stability Control is included for each crane that is ordered as CE-marked. FSC automatically limits the crane operation if all conditions to ensure its stability are not satisfied. The system is available in different versions, specifically designed for each type of crane. The operator can monitor the status information on the radio control display (optional and model specific) and on the user panel display on the crane.

”

The crane has a good lifting geometry. We load and unload many times in the space of one day and the crane's geometry makes sure each work cycle flows smoothly.

Micke Andersson | EHAB Åkeri



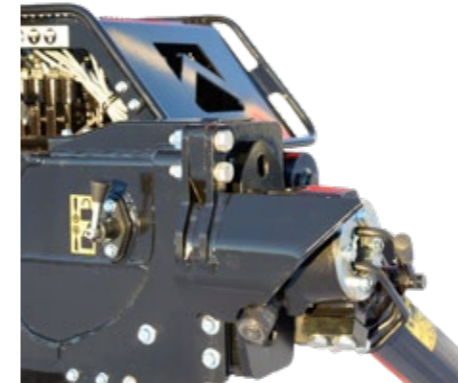
Support leg valve
Electrically/manually operated. 4 sections suitable for single-circuit, dual-circuit and LS systems.



Activation lock
Safety device when operating the stabiliser leg valve.



Colour options
The standard colour is red (RAL 3020) but the main boom and outer boom may be ordered in any RAL colour as an option.



Retraction of support legs
180 degree support leg retraction with external hose routing or mechanical retraction 30, 45 or 60 degrees.

Control more than the crane
Start and stop the truck's engine and control its rpm.

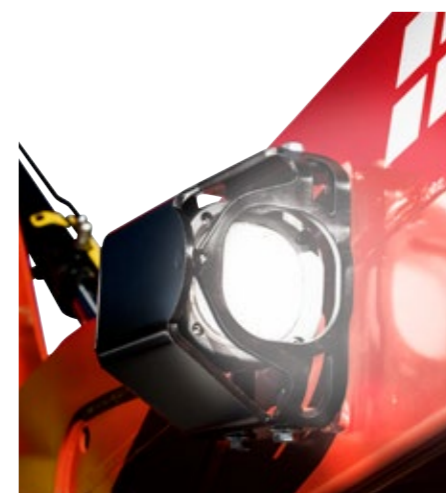


Slew sensor
The slew motor is equipped with a slew position sensor.



Lighting
Several lighting options are available for illuminating the work area. For example:

- + **Outer boom:** Forward-facing LED lighting on either side of the crane boom.
- + **Open operator's position:** Front-facing LED lamps.
- + **Driver's cab:** Powerful, forward-facing, roof-mounted LED light ramp and a rearward-facing LED light mounted on the lower rear part of the cab



OVERVIEW CRANES



RZ13								LS	1K	2K	Weight	Telescope
RZ13.1	8,5	118 kNm	8,45 m	2,05 m	425°	25,0	26	120-160	80-100	2 x 75	2380 kg**	Single
RZ13.2	10,5	112 kNm	10,45 m	4,0 m	425°	25,0	26	120-160	80-100	2 x 75	2460 kg**	Double
RZ13TR.1	7,9	122 kNm	7,92 m	2,58 m	425°	25,0	27	120-160	80-100	2 x 75	2490 kg**	Single
RZ13TR.2	9,5	118 kNm	9,5 m	4,16 m	425°	25,0	27	120-160	80-100	2 x 75	2570 kg**	Double

RZ15								LS	1K	2K	Weight	Telescope
RZ15.1	8,5	132 kNm	8,45 m	2,05 m	425°	25,0	28,5	120-160	80-100	2 x 75	2380 kg**	Single
RZ15.2	10,5	128 kNm	10,45 m	4,00 m	425°	25,0	28,5	120-160	80-100	2 x 75	2460 kg**	Double

RZ16XP								LS	1K	2K	Weight	Telescope
RZ16XP.1	8,5	148 kNm	8,45 m	2,05 m	425°	25,0	31,5	120-160	80-100	2 x 75	2380 kg**	Single
RZ16XP.2	10,5	144 kNm	10,45 m	4,00 m	425°	25,0	31,5	120-160	80-100	2 x 75	2460 kg**	Double

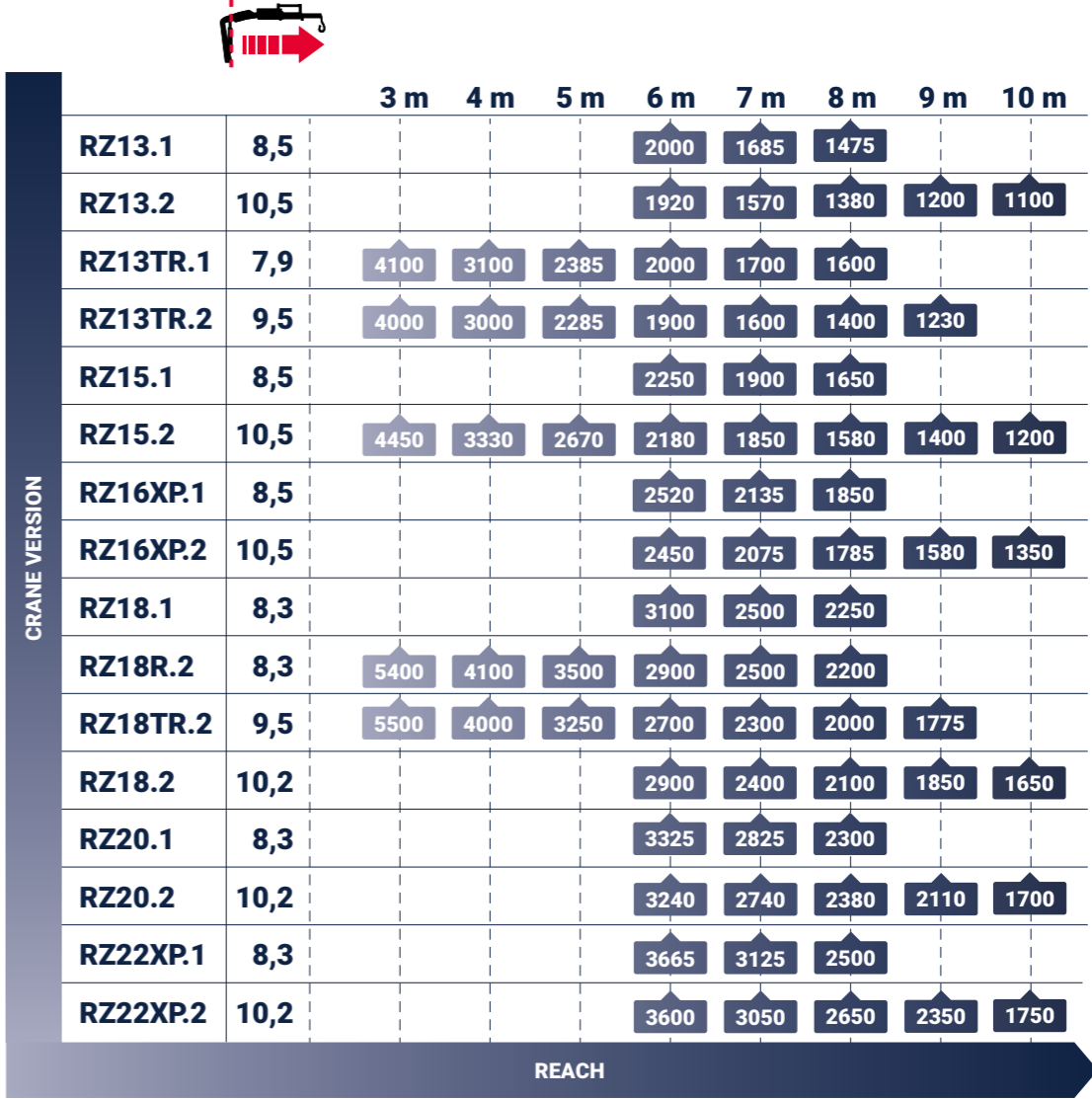
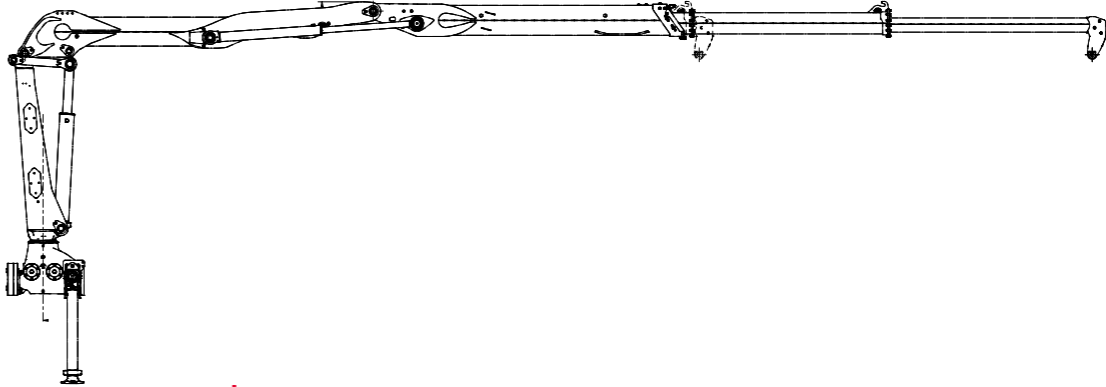
RZ18								LS	1K	2K	Weight	Telescope
RZ18.1	8,3	182 kNm	8,3 m	1,85 m	425°	29,3	26	120-160	80-100	2 x 75	2910 kg**	Single
RZ18R.2	8,3	172 kNm	8,38 m	1,85 m	425°	29,3	26	120-160	80-100	2 x 75	2850 kg**	Double
RZ18TR.2	9,5	162 kNm	9,5 m	4,16 m	425°	29,3	28	120-160	80-100	2 x 75	3000 kg*	Double
RZ18.2	10,2	171 kNm	10,15 m	3,70 m	425°	29,3	26	120-160	80-100	2 x 75	3000 kg**	Double

RZ20								LS	1K	2K	Weight	Telescope
RZ20.1	8,3	196 kNm	8,3 m	1,85 m	425°	29,3	28,5	120-160	80-100	2 x 75	2910 kg**	Single
RZ20.2	10,2	191 kNm	10,15 m	3,70 m	425°	29,3	28,5	120-160	80-100	2 x 75	3000 kg**	Double

RZ22XP								LS	1K	2K	Weight	Telescope
RZ22XP.1	8,3	216 kNm	8,3 m	1,85 m	425°	29,3	31,5	120-160	80-100	2 x 75	2910 kg**	Single
RZ22XP.2	10,2	212 kNm	10,15 m	3,70 m	425°	29,3	31,5	120-160	80-100	2 x 75	3000 kg**	Double

* = Weight with open operator's position.
** = Weight without open operator's position.

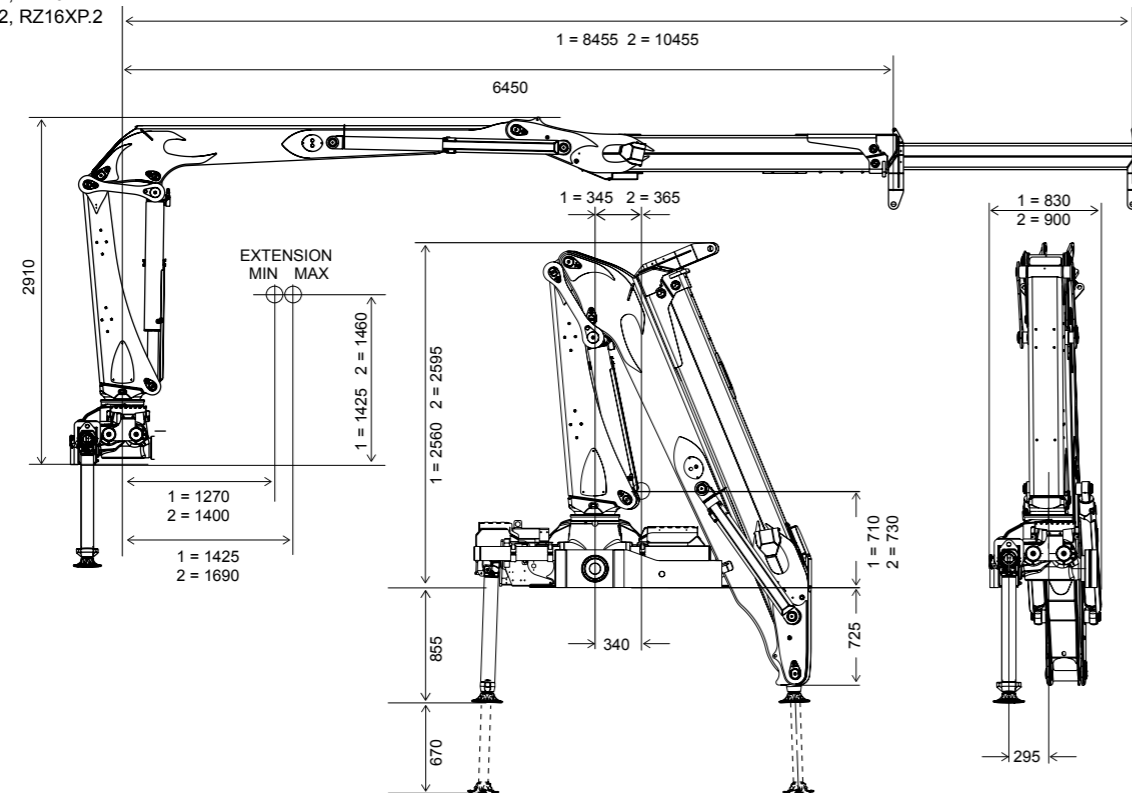
LIFTING FORCE* IN KG FOR RESPECTIVE REACH



* applies to unequipped crane without e.g. grapple and rotator

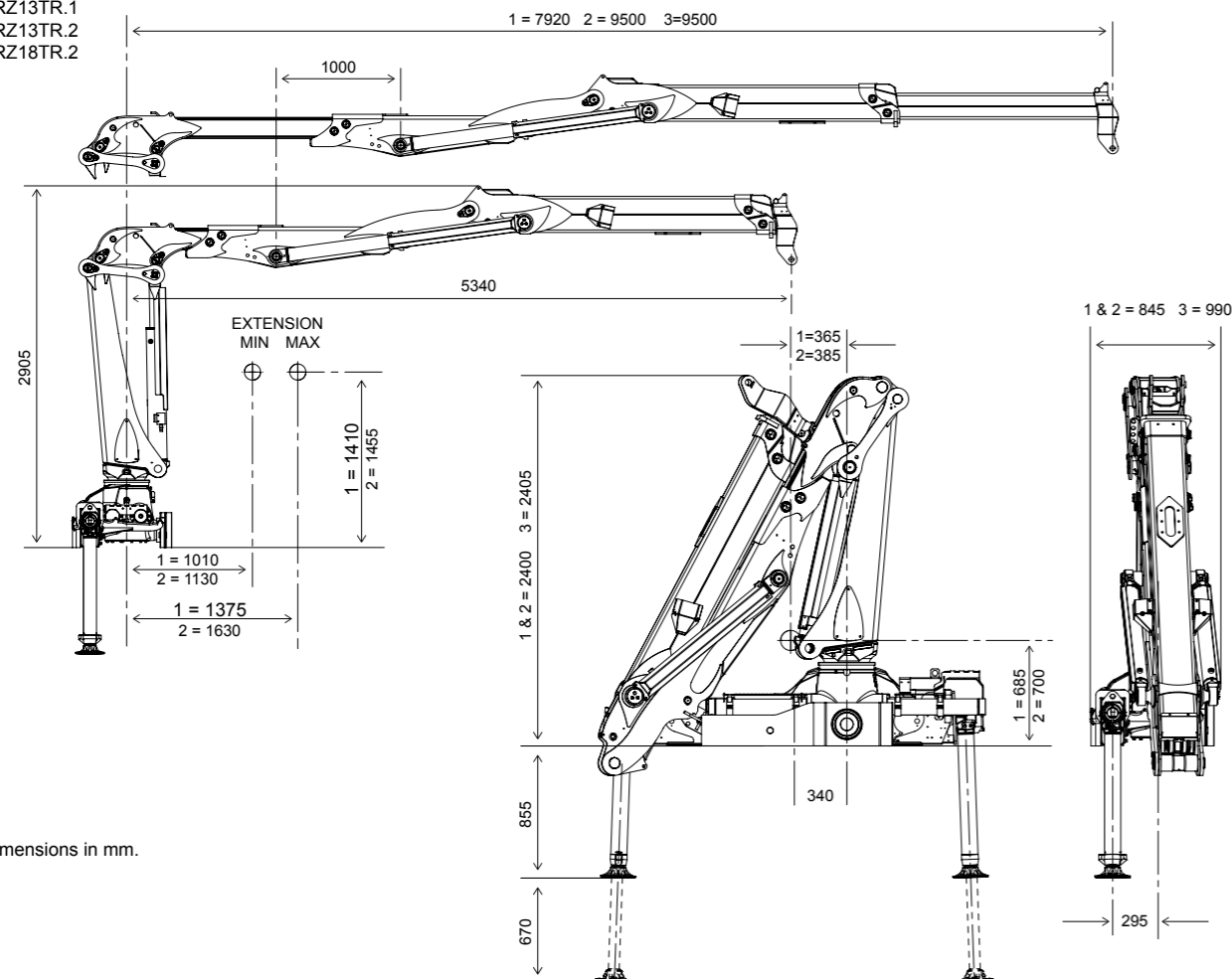
DIMENSIONS* RZ13.1 / RZ13.2 | RZ15.1 / RZ15.2 | RZ16XP.1 / RZ16XP.2

1 = RZ13.1, RZ15.1, RZ16XP.1
2 = RZ13.2, RZ15.2, RZ16XP.2



DIMENSIONS* RZ13TR.1 / RZ13TR.2 | RZ18TR.2

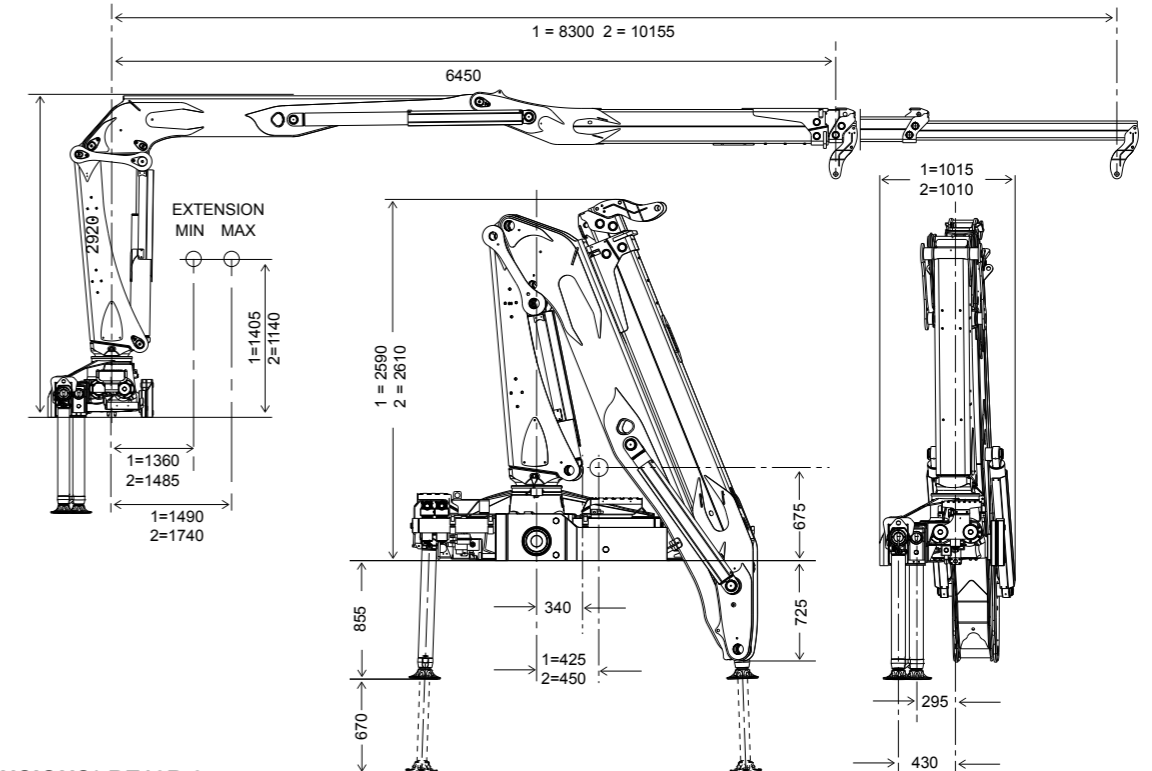
1 = RZ13TR.1
2 = RZ13TR.2
3 = RZ18TR.2



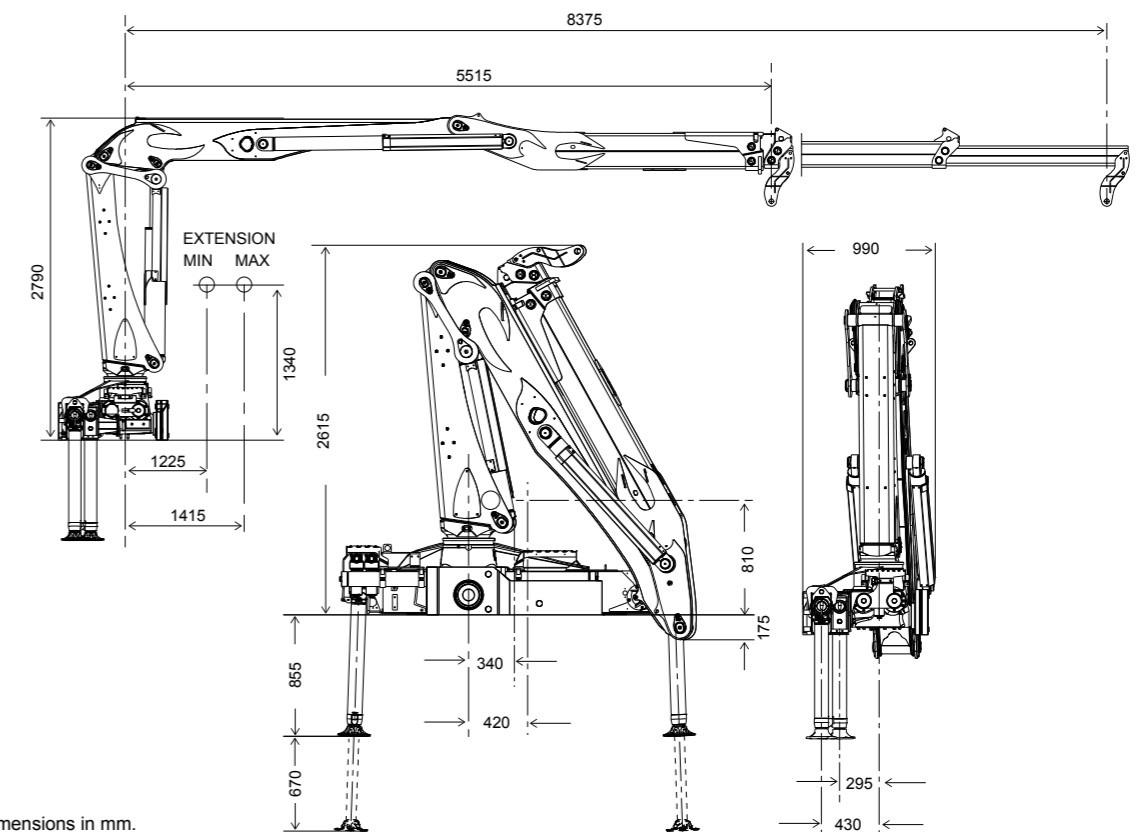
*All dimensions in mm.

DIMENSIONS* RZ18.1 / RZ18.2 | RZ20.1 / RZ20.2 | RZ22XP.1 / RZ22XP.2

1 = RZ18.1, RZ20.1, RZ22XP.1
2 = RZ18.2, RZ20.2, RZ22XP.2



DIMENSIONS* RZ18R.2



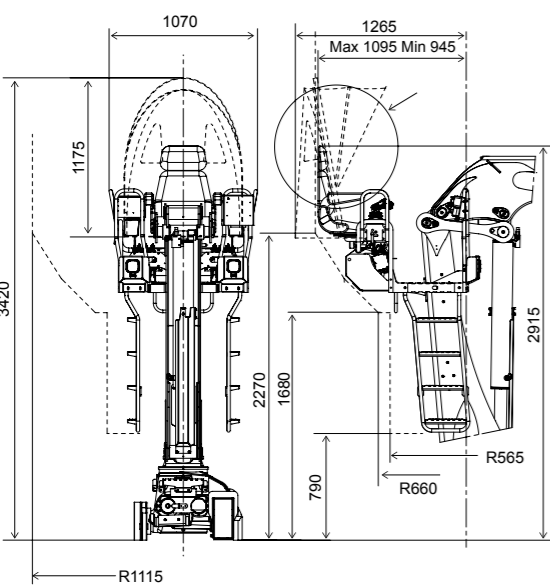
*All dimensions in mm.
The illustrations show the dimensions of a number of basic crane positions.

OPERATOR'S POSITION

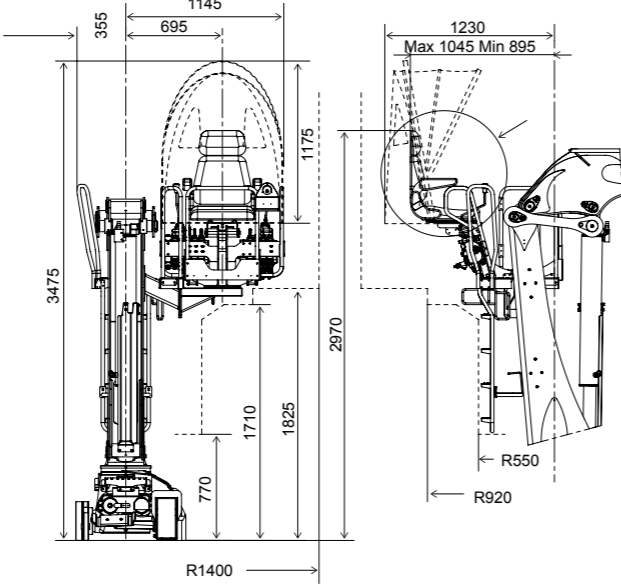
TECHNICAL DATA
RZ13 | RZ15 | RZ16XP | RZ18 | RZ20 | RZ22XP

OPERATOR'S POSITION - OPEN

RZ13, RZ15, RZ16XP, RZ18, RZ18R, RZ20, RZ22XP



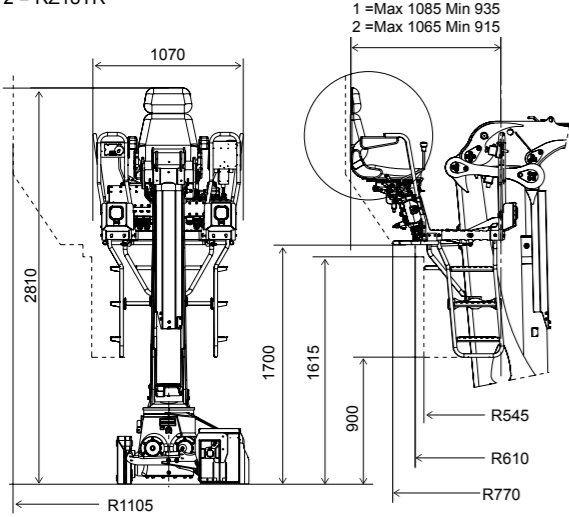
CENTRE MOUNTED



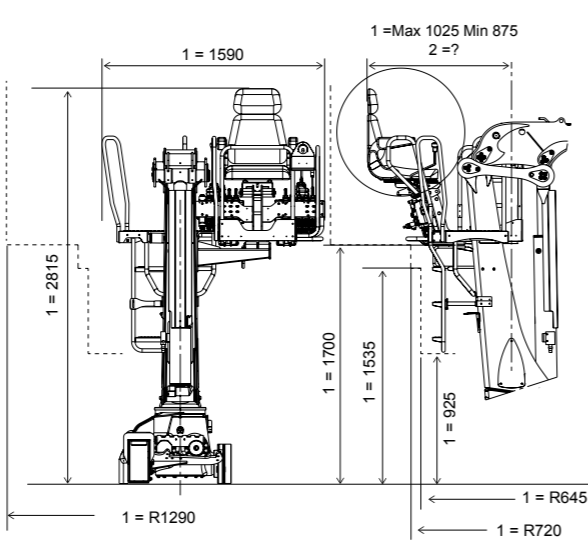
LEFT & RIGHT MOUNTED

OPERATOR'S POSITION - OPEN

1 = RZ13TR
2 = RZ18TR



CENTRE MOUNTED



LEFT & RIGHT MOUNTED

Because we are constantly developing and improving our products, we reserve the right to modify the data in the brochure.

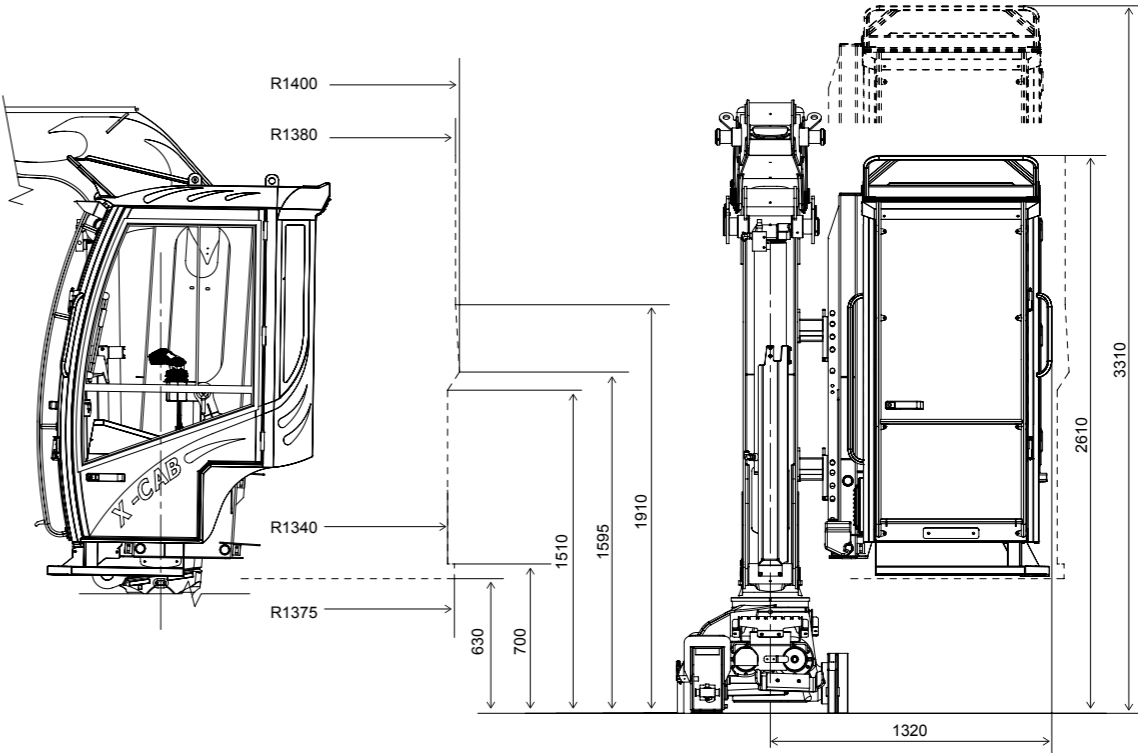
We are not responsible for misprints. If you need additional information or design documentation, please contact us at Cranab.

*All dimensions in mm.

CAB

TECHNICAL DATA
RZ13 | RZ15 | RZ16XP | RZ18 | RZ20 | RZ22XP

CABIN ROTATION VOLUME



*All dimensions in mm.

Experience. Technology. Innovation.

Cranab's factories are located in Vindeln, deep in the forests of West Bothnia. It's where we develop and manufacture world-class cranes, grapples and land clearing machines.

At Cranab, we are driven by a genuine passion for forestry and road clearance technology. We are also driven by our efforts to advance development and a desire for constant improvement.

We are based in northern Sweden, but do business all over the world. We listen carefully to what our customers and users have to say and always respond to market demands. Attentiveness, 60 years of experience and sound technological know-how form the basis of our innovative products.

Cranab, which manufactures products for both Cranab and Slagkraft, is part of the Fassi Group. In addition to Cranab AB, the Swedish arm of the group also includes Vimek AB which manufactures forest machines for non-destructive thinning. Today, the two companies are among the world's leading players in their fields. Their common success factors are the development, manufacture and marketing of leading products and solutions for the latest methods and professional users in forestry and road clearing.



FASSI GROUP